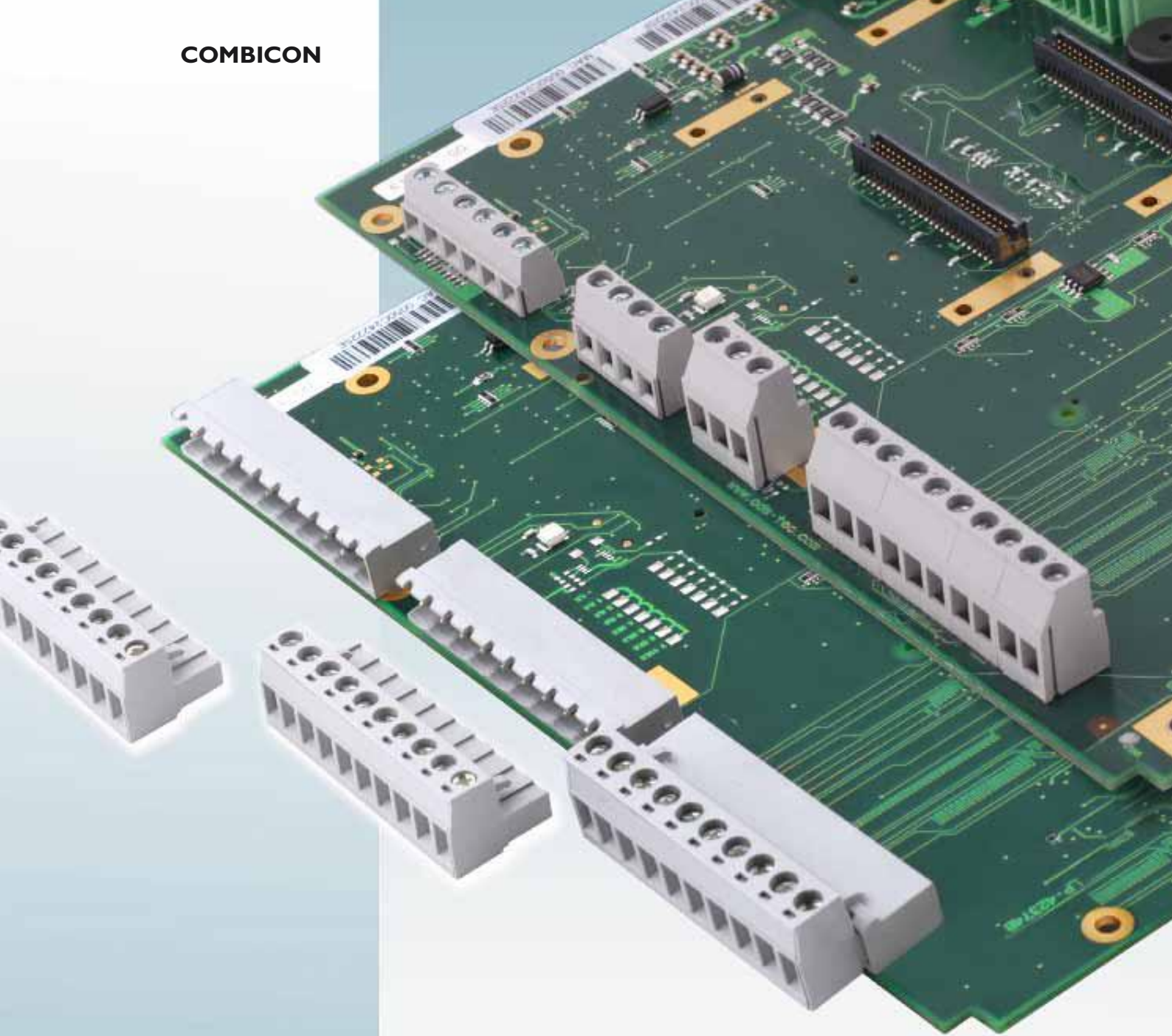


COMBICON



# Printed circuit board connection

COMBICON compact BC

# PHOENIX CONTACT – in dialog with customers and partners worldwide

Phoenix Contact is a leading manufacturer of electrical connection and industrial automation technology. Founded more than 80 years ago, the company now has 8400 employees, of which more than 4000 are in Germany. A sales network with a good 40 subsidiaries and over 30 sales representatives guarantees customer proximity directly on site.

The product range includes high-grade components, systems and services across a wide range of applications. The offer ranges from modular terminal blocks to interface technology, PCB connection systems, solutions for surge protection up to hardware and software solutions for the automation of industrial systems.



Phoenix Contact places great importance on in-house competence and expertise: The design and development departments continuously implement innovative product ideas, developing specific solutions to meet customer requirements. Numerous patents stand witness to the fact that many products from Phoenix Contact are a result of our in-house developments.





## Quality is our top priority

Reliable connections is our daily motto. The quality of our products is the key. This is not just on the finished products, but is ongoing during every step of production.

We are also committed to the use of natural resources to benefit employees, business partners and the environment.

A process-oriented, integrated management system based on the international standards DIN EN ISO 9001 and 14001

ensures that not only legislation and standards such as the EU directives 2002/96/EU (WEEE) and 2002/95/EU (RoHS), but also customers' wishes are taken into account in the manufacturing of our products.



# Contents

<b>Applications</b>	page 4
<b>Unique Selling Proposition</b>	page 5
<b>Terminal blocks</b>	
- pitch 3.81/5.08 mm	page 6-7
- pitch 3.5/5.0 mm	page 8-9
<b>Plug connectors</b>	
- pitch 3.81 mm	page 10-13
- pitch 3.50 mm	page 14-17
- pitch 5.08 mm	page 18-21
- pitch 5.00 mm	page 22-25
<b>Technical information</b>	page 26
<b>Derating curves</b>	page 27

# Applications

## Power supplies for Communication

A safe connection technology is important for power supplies in the field of telecommunication. The well established screw technology is advantageous for the versatile connection and maintenance, assuring long term stable operation.



## Fire detection and alarm systems

The application of Phoenix Contact small size connection technology for fire alarm systems saves additional space on the printed circuit board.

The use of V0 inflammability classified material make it safe for men and goods.



## Air Conditioning

Due to its application the air conditioning has special requirements for the connection technology. The screw connection technology from Phoenix Contact guarantees a safe connection from  $-40^{\circ}\text{C}$  to  $105^{\circ}\text{C}$ . IP 20 protection and a good anti vibration ensure a safe and stable operation.



## Building Security

For Building Security the transmission of small signals respectively a fast reaction is required. The screw connection technology from Phoenix Contact ensures a good signal transmission by its low contact resistance and high resistance against aging.



# Unique Selling Proposition

Phoenix Contact has a leading position in the industrial connection technology. We have long and manifold experience in product design and modern production processes. This guarantees the high quality of our products.

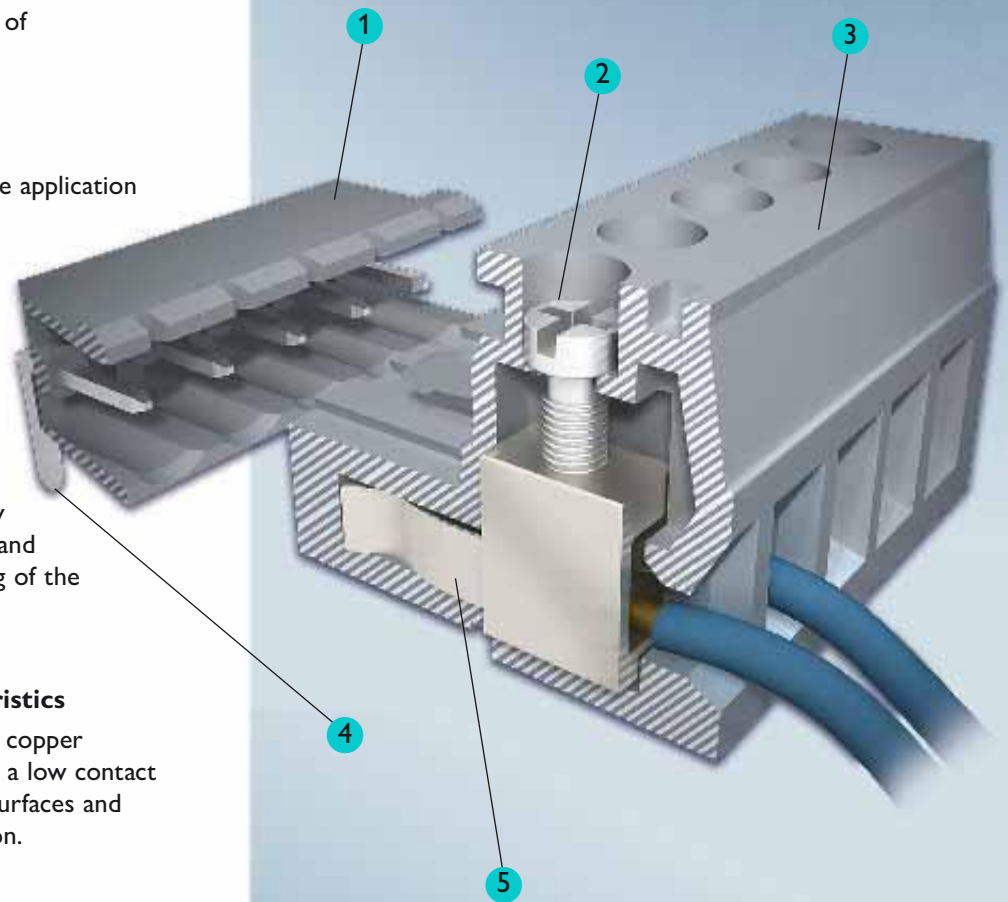
**1 High fire prevention level**  
Insulation housings are made of UL 94 V0 material.

**2 Easy handling**  
+/- screws allow for a flexible application with a fast installation.

**3 Leadfree connection**  
The products are RoHS compliant.

**4 Good solderability**  
The square solder pin is easy to insert into the PC board and is advantageous for the rising of the solder.

**5 Good electrical characteristics**  
Metal parts are made of high copper content alloys. This results in a low contact resistance with high quality surfaces and excellent corrosion protection.







**BC-508X14-...**  
Conductor connection  
parallel to the pcb Pitch 5.08 mm

(IEC)	solid [mm <sup>2</sup> ]	stranded [mm <sup>2</sup> ]	AWG	I [A]	U [V]
Connection data	0.14-2.5	0.14-1.5	26-14	17.5	400

Type	Order No.	Pcs./ Pkt.
BC-508X14-2	54 30 38 6	100
BC-508X14-3	54 30 39 9	

III/3	III/2	II/2
250	400	630
4	4	4
17.5/1.5		

0.14-2.5/0.14-1.5/26-14  
0.25-1.5/0.25-1.5

0.14-1/0.14-0.75  
0.25-0.5  
0.5-1  
7  
M3  
4.4-5.3/0.5-0.6  
PA  
V0  
300/15/30-14  
300/10/30-14

5.08  
1.3  
0.9x0.9



**BC-508X18-...**  
Conductor connection  
parallel to the pcb Pitch 5.08 mm

(IEC)	solid [mm <sup>2</sup> ]	stranded [mm <sup>2</sup> ]	AWG	I [A]	U [V]
Connection data	0.2-4	0.2-2.5	24-12	24	400

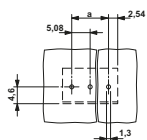
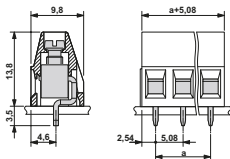
Type	Order No.	Pcs./ Pkt.
BC-508X18-2	54 30 40 9	100
BC-508X18-3	54 30 41 2	

III/3	III/2	II/2
250	400	630
4	4	4
24/2.5		

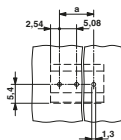
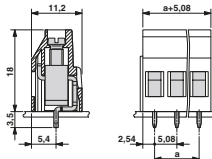
0.2-4/0.2-2.5/24-12  
0.25-2.5/0.25-1.5

0.2-1.5/0.2-1.5  
0.25-0.75  
0.5-1.5  
7  
M3  
4.4-5.3/0.5-0.6  
PA  
V0  
300/15/30-12  
300/10/30-12

5.08  
1.3  
0.9x0.9



Drilling diagram



Drilling diagram

# COMBICON compact BC terminal blocks

## BC - PCB terminal blocks

Pitch: 3.5/5.0 mm



New



New

BC-350X9-...  
Conductor connection  
parallel to the pcb Pitch 3.5 mm

(IEC)	solid [mm <sup>2</sup> ]	stranded [mm <sup>2</sup> ]	AWG	I [A]	U [V]
Connection data	0.14-1.5	0.14-1.5	26-16	10	200

BC-500X10-...  
Conductor connection  
parallel to the pcb Pitch 5.0 mm

(IEC)	solid [mm <sup>2</sup> ]	stranded [mm <sup>2</sup> ]	AWG	I [A]	U [V]
Connection data	0.14-1.5	0.14-1.5	26-16	13.5	400

No. of positions	Dimension a [mm]	
	BC-350	BC-500
2	3.5	5.0
3	7.0	10.0
4	10.5	
5	14.0	
6	17.5	
7	21.0	
8	24.5	
9	28.0	
10	31.5	
11	35.0	
12	38.5	
13	42.0	
14	45.5	
15	49.0	
16	52.5	

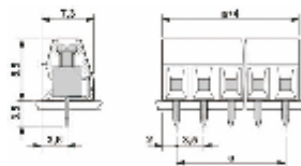
Type	Order No.	Pcs./Pkt.
BC-350X9-2	54 30 00 1	100
BC-350X9-3	54 30 01 4	
BC-350X9-4	54 30 02 7	
BC-350X9-5	54 30 03 0	
BC-350X9-6	54 30 04 3	
BC-350X9-7	54 30 05 6	
BC-350X9-8	54 30 06 9	
BC-350X9-9	54 30 07 2	
BC-350X9-10	54 30 08 5	
BC-350X9-11	54 30 09 8	
BC-350X9-12	54 30 10 8	
BC-350X9-13	54 30 11 1	
BC-350X9-14	54 30 12 4	
BC-350X9-15	54 30 13 7	
BC-350X9-16	54 30 14 0	

Type	Order No.	Pcs./Pkt.
BC-500X10-2	54 30 30 2	100
BC-500X10-3	54 30 31 5	

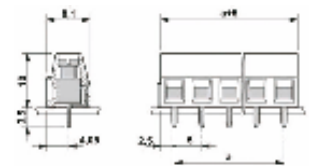
Technical data in accordance with IEC/DIN VDE	
Surge voltage category/contamination class	~/-
Rated voltage	[V]
Rated surge voltage	[kV]
Rated current/cross section	[A] [mm <sup>2</sup> ]
Connection capacity	
Solid/stranded/conductor sizes	[mm <sup>2</sup> ]/[mm <sup>2</sup> ]/AWG
Stranded with ferrule without/with plastic sleeve	[mm <sup>2</sup> ]
Multiple connection (2 conductors with same cross section)	
Solid/stranded	[mm <sup>2</sup> ]
Stranded with ferrules without plastic sleeve	[mm <sup>2</sup> ]
Stranded with TWIN ferrule with plastic sleeve	[mm <sup>2</sup> ]
Stripping length	mm
Thread	-
Torque	[lb inch]/[Nm]
Insulation material	
Inflammability class in acc. with UL94	
Approval data	UL: [V]/[A]/AWG
Nominal voltage/ Nominal current/ Connection capacity AWG	CSA: [V]/[A]/AWG
Dimensions	
Pitch	[mm]
Hole diameter	[mm]
Pin dimensions	[mm] x [mm]

III/3	III/2	II/2
160	200	400
2.5	2.5	2.5
10/1.5		
0.14-1.5/0.14-1.5/26-16		
0.25-0.5/0.25-0.5		
0.14-0.5/0.14-0.34		
-		
-		
5		
M2		
1.95-2.21/0.22-0.25		
PA		
V0		
300/10/30-16		
300/10/30-16		
3.5		
1.1		
0.5x0.9		

III/3	III/2	II/2
250	400	630
4	4	4
13.5/1.5		
0.14-1.5/0.14-1.5/26-16		
0.25-1.0/0.25-1.5		
0.14-0.75/0.14-0.75		
0.25-0.5		
0.5-1		
6		
M3		
4.4-5.3/0.5-0.6		
PA		
V0		
300/10/30-14		
300/10/30-14		
5.0		
1.3		
0.5x1		



Drilling diagram



Drilling diagram





**New**

**BC-500X14-...**  
Conductor connection  
parallel to the pcb Pitch 5.0 mm

(IEC)	solid [mm <sup>2</sup> ]	stranded [mm <sup>2</sup> ]	AWG	I [A]	U [V]
Connection data	0.14-2.5	0.14-1.5	26-14	17.5	400

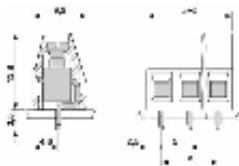
Type	Order No.	Pcs./ Pkt.
BC-500X14-2	54 30 32 8	100
BC-500X14-3	54 30 33 1	

III/3	III/2	II/2
250	400	630
4	4	4
17.5/1.5		

0.14-2.5/0.14-1.5/26-14  
0.25-1.5/0.25-1.5

0.14-1/0.14-0.75  
0.25-0.5  
0.5-1  
7  
M3  
4.4-5.3/0.5-0.6  
PA  
V0  
300/15/30-14  
300/10/28-14

5.0  
1.3  
0.9x0.9



Drilling diagram



**New**

**BC-500X18-...**  
Conductor connection  
parallel to the pcb Pitch 5.0 mm

(IEC)	solid [mm <sup>2</sup> ]	stranded [mm <sup>2</sup> ]	AWG	I [A]	U [V]
Connection data	0.2-4	0.2-2.5	24-12	24	400

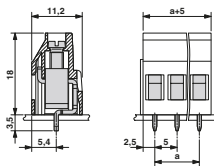
Type	Order No.	Pcs./ Pkt.
BC-500X18-2	54 30 34 4	100
BC-500X18-3	54 30 35 7	

III/3	III/2	II/2
250	400	630
4	4	4
24/2.5		

0.2-4/0.2-2.5/24-12  
0.25-2.5/0.25-1.5

0.2-1.5/0.2-1.5  
0.25-0.75  
0.5-1.5  
7  
M3  
4.4-5.3/0.5-0.6  
PA  
V0  
300/15/30-12  
300/10/30-12

5.0  
1.3  
0.9x0.9



Drilling diagram



**New**

**BCA-500X18-...**  
35° angled connection direction to the pcb  
Pitch 5.0 mm

(IEC)	solid [mm <sup>2</sup> ]	stranded [mm <sup>2</sup> ]	AWG	I [A]	U [V]
Connection data	0.2-4	0.2-2.5	24-12	24	400

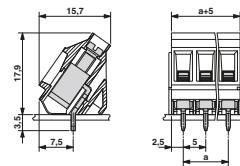
Type	Order No.	Pcs./ Pkt.
BCA-500X18-2	54 36 86 9	100
BCA-500X18-3	54 36 87 2	

III/3	III/2	II/2
250	400	630
4	4	4
24/2.5		

0.2-4/0.2-2.5/24-12  
0.25-2.5/0.25-1.5

0.2-1.5/0.2-1  
0.25-0.75  
0.5-1.5  
7  
M3  
4.4-5.3/0.5-0.6  
PA  
V0  
UL approval in process  
UL approval in process

5.0  
1.3  
0.9x0.9



Drilling diagram

# COMBICON compact BC plug connectors

## BC - PCB terminal blocks

### Header

Pitch: 3.81 mm



Coding profile CP-BC-M  
Order No. 5436160



**BCH-381H-...**  
Conductor connection  
parallel to the pcb Pitch 3.81 mm



**BCH-381V-...**  
Plug-in direction vertical to the pcb  
Pitch 3.81 mm

No. of positions	Dimension a [mm]
<b>BCH-381</b>	
2	3.81
3	7.62
4	11.43
5	15.24
6	19.05
7	22.86
8	26.67
9	30.48
10	34.29
11	38.1
12	41.91
13	45.72
14	49.53
15	53.34
16	57.15
17	60.96
18	64.77
19	68.58
20	72.39

		I [A]	U [V]
		8	200

Type	Order No.	Pcs./Pkt.
BCH-381H- 2	54 31 18 1	100
BCH-381H- 3	54 31 19 4	
BCH-381H- 4	54 31 20 4	
BCH-381H- 5	54 31 21 7	
BCH-381H- 6	54 31 22 0	
BCH-381H- 7	54 31 23 3	
BCH-381H- 8	54 31 24 6	
BCH-381H- 9	54 31 25 9	
BCH-381H-10	54 31 26 2	
BCH-381H-11	54 31 27 5	
BCH-381H-12	54 31 28 8	
BCH-381H-13	54 31 29 1	
BCH-381H-14	54 31 30 1	
BCH-381H-15	54 31 31 4	
BCH-381H-16	54 31 32 7	
BCH-381H-17	54 31 33 0	
BCH-381H-18	54 31 34 3	
BCH-381H-19	54 31 35 6	
BCH-381H-20	54 31 36 9	

		I [A]	U [V]
		8	200

Type	Order No.	Pcs./Pkt.
BCH-381V- 2	54 31 56 3	100
BCH-381V- 3	54 31 57 6	
BCH-381V- 4	54 31 58 9	
BCH-381V- 5	54 31 59 2	
BCH-381V- 6	54 31 60 2	
BCH-381V- 7	54 31 61 5	
BCH-381V- 8	54 31 62 8	
BCH-381V- 9	54 31 63 1	
BCH-381V-10	54 31 64 4	
BCH-381V-11	54 31 65 7	
BCH-381V-12	54 31 66 0	
BCH-381V-13	54 31 67 3	
BCH-381V-14	54 31 68 6	
BCH-381V-15	54 31 69 9	
BCH-381V-16	54 31 70 9	
BCH-381V-17	54 31 71 2	
BCH-381V-18	54 31 72 5	
BCH-381V-19	54 31 73 8	
BCH-381V-20	54 31 74 1	

#### Technical data in accordance with IEC/DIN VDE

Surge voltage category/contamination class	-/-
Rated voltage	[V]
Rated surge voltage	[kV]
Rated current/cross section	[A] [mm²]
Insulation material	PA
Inflammability class in acc. with UL94	V-0
Approval data	UL: [V]/[A]/AWG
Nominal voltage/ Nominal current/ Connection capacity AWG	CSA: [V]/[A]/AWG

#### Dimensions

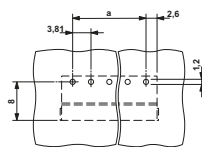
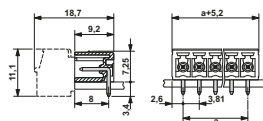
Pitch	[mm]	3.81
Hole diameter	[mm]	1.2
Pin dimensions	[mm] x [mm]	0.8x0.8

III/3	III/2	II/2
160	200	400
2.5	2.5	2.5
8/-		
PA		
V-0		
300/8/-		
300/8/-		

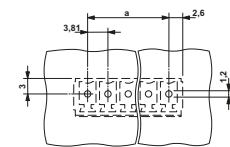
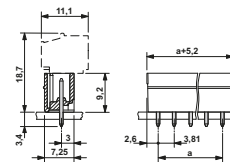
3.81
1.2
0.8x0.8

III/3	III/2	II/2
160	200	400
2.5	2.5	2.5
8/-		
PA		
V-0		
300/8/-		
300/8/-		

3.81
1.2
0.8x0.8



Drilling diagram



Drilling diagram

# COMBICON compact BC plug connectors

## BC - PCB terminal blocks

### Plug

Pitch: 3.81 mm



### BCP-381-...

Plug-in direction parallel  
to the conductor axis Pitch 3.81 mm

(IEC)	solid [mm <sup>2</sup> ]	stranded [mm <sup>2</sup> ]	AWG	I [A]	U [V]
Connection data	0.2-1.5	0.2-1.5	24-16	8	200

No. of positions	Dimension a [mm] BCP-381
2	3.81
3	7.62
4	11.43
5	15.24
6	19.05
7	22.86
8	26.67
9	30.48
10	34.29
11	38.1
12	41.91
13	45.72
14	49.53
15	53.34
16	57.15
17	60.96
18	64.77
19	68.58
20	72.39

Type	Order No.	Pcs./ Pkt.
BCP-381-2	54 34 92 6	100
BCP-381-3	54 34 93 9	
BCP-381-4	54 34 94 2	
BCP-381-5	54 34 95 5	
BCP-381-6	54 34 96 8	
BCP-381-7	54 34 97 1	
BCP-381-8	54 34 98 4	
BCP-381-9	54 34 99 7	
BCP-381-10	54 35 00 6	
BCP-381-11	54 35 01 9	
BCP-381-12	54 35 02 2	
BCP-381-13	54 35 03 5	
BCP-381-14	54 35 04 8	
BCP-381-15	54 35 05 1	
BCP-381-16	54 35 06 4	
BCP-381-17	54 35 07 7	
BCP-381-18	54 35 08 0	
BCP-381-19	54 35 09 3	
BCP-381-20	54 35 10 3	

#### Technical data in accordance with IEC/DIN VDE

Surge voltage category/contamination class	-/-
Rated voltage	[V]
Rated surge voltage	[kV]
Rated current/cross section	[A] [mm <sup>2</sup> ]

III/3	III/2	II/2
160	200	400
2.5	2.5	2.5
8/1.5		

#### Connection capacity

Solid/stranded/conductor sizes	[mm <sup>2</sup> ]/[mm <sup>2</sup> ]/AWG
Stranded with ferrule without/with plastic sleeve	[mm <sup>2</sup> ]

0.2-1.5/0.2-1.5/24-16
0.25-1.5/0.25-0.5

#### Multiple connection (2 conductors with same cross section)

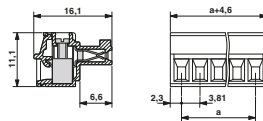
Solid/stranded	[mm <sup>2</sup> ]
Stranded with ferrules without plastic sleeve	[mm <sup>2</sup> ]
Stranded with TWIN ferrule with plastic sleeve	[mm <sup>2</sup> ]
Stripping length	mm
Thread	-
Torque	[lb inch]/[Nm]
Insulation material	
Inflammability class in acc. with UL94	
Approval data	UL: [V]/[A]/AWG
Nominal voltage/ Nominal current/ Connection capacity AWG	CSA: [V]/[A]/AWG

0.2-0.5/0.2-0.75
0.25-0.34
0.5
7
M2
1.95-2.21/0.22-0.25
PA
V0
300/8/30-14
300/8/30-14

#### Dimensions

Pitch	[mm]
-------	------

3.81



# COMBICON compact BC plug connectors

## BC - PCB terminal blocks

### Header

Pitch: 3.81 mm



Coding profile CP-BC-M  
Order No. 5436160

No. of positions	Dimension a [mm]
<b>BCH-381</b>	
2	3.81
3	7.62
4	11.43
5	15.24
6	19.05
7	22.86
8	26.67
9	30.48
10	34.29
11	38.1
12	41.91
13	45.72
14	49.53
15	53.34
16	57.15
17	60.96
18	64.77
19	68.58
20	72.39

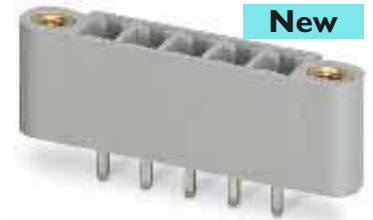


**BCH-381HF-...**  
Header with screw flange

Pitch 3.81 mm

I	U
[A]	[V]
8	200

Type	Order No.	Pcs./Pkt.
BCH-381HF- 2	54 31 37 2	100
BCH-381HF- 3	54 31 38 5	
BCH-381HF- 4	54 31 39 8	
BCH-381HF- 5	54 31 40 8	
BCH-381HF- 6	54 31 41 1	
BCH-381HF- 7	54 31 42 4	
BCH-381HF- 8	54 31 43 7	
BCH-381HF- 9	54 31 44 0	
BCH-381HF-10	54 31 45 3	
BCH-381HF-11	54 31 46 6	
BCH-381HF-12	54 31 47 9	
BCH-381HF-13	54 31 48 2	
BCH-381HF-14	54 31 49 5	
BCH-381HF-15	54 31 50 5	
BCH-381HF-16	54 31 51 8	
BCH-381HF-17	54 31 52 1	
BCH-381HF-18	54 31 53 4	
BCH-381HF-19	54 31 54 7	
BCH-381HF-20	54 31 55 0	



**BCH-381VF-...**  
Header with screw flange

Pitch 3.81 mm

I	U
[A]	[V]
8	200

Type	Order No.	Pcs./Pkt.
BCH-381VF- 2	54 31 75 4	100
BCH-381VF- 3	54 31 76 7	
BCH-381VF- 4	54 31 77 0	
BCH-381VF- 5	54 31 78 3	
BCH-381VF- 6	54 31 79 6	
BCH-381VF- 7	54 31 80 6	
BCH-381VF- 8	54 31 81 9	
BCH-381VF- 9	54 31 82 2	
BCH-381VF-10	54 31 83 5	
BCH-381VF-11	54 31 84 8	
BCH-381VF-12	54 31 85 1	
BCH-381VF-13	54 31 86 4	
BCH-381VF-14	54 31 87 7	
BCH-381VF-15	54 31 88 0	
BCH-381VF-16	54 31 89 3	
BCH-381VF-17	54 31 90 3	
BCH-381VF-18	54 31 91 6	
BCH-381VF-19	54 31 92 9	
BCH-381VF-20	54 31 93 2	

#### Technical data in accordance with IEC/DIN VDE

Surge voltage category/contamination class	-/-
Rated voltage	[V]
Rated surge voltage	[kV]
Rated current/cross section	[A] [mm <sup>2</sup> ]
Insulation material	PA
Inflammability class in acc. with UL94	V-0
Approval data	UL: [V]/[A]/AWG
Nominal voltage/ Nominal current/ Connection capacity AWG	CSA: [V]/[A]/AWG

#### Dimensions

Pitch	[mm]
Hole diameter	[mm]
Pin dimensions	[mm] x [mm]

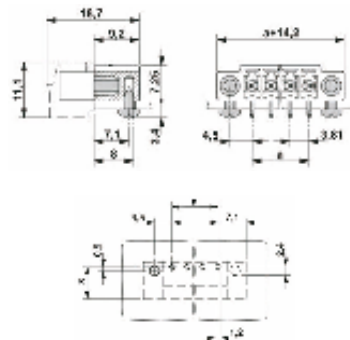
III/3	III/2	II/2
160	200	400
2.5	2.5	2.5
8/-		
PA		
V-0		
300/8/-		
300/8/-		

3.81
1.2
0.8x0.8

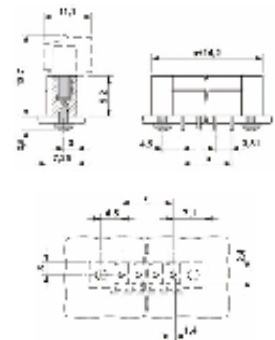
III/3	III/2	II/2
160	200	400
2.5	2.5	2.5
8/-		
PA		
V-0		
300/8/-		
300/8/-		

3.81
1.2
0.8x0.8

Note:  
Mounting screws for BCH-381H(V)F-...:  
Sheet metal screw ISO 1481-ST 2.2 x 4.5 C or ISO 7049-ST 2.2 x 4.5 C.  
A screw connection is only permitted prior to soldering.



Drilling diagram



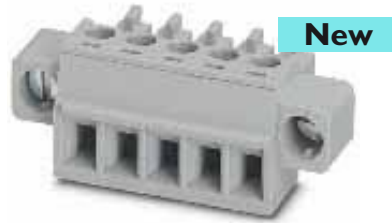
Drilling diagram

# COMBICON compact BC plug connectors

## BC - PCB terminal blocks

### Plug

Pitch: 3.81 mm



**BCP-381F-...**  
Plug with screw flange

Pitch 3.81 mm

(IEC)	solid [mm <sup>2</sup> ]	stranded [mm <sup>2</sup> ]	AWG	I [A]	U [V]
Connection data	0.2-1.5	0.2-1.5	24-16	8	200

No. of positions	Dimension a [mm] <b>BCP-381F</b>
2	3.81
3	7.62
4	11.43
5	15.24
6	19.05
7	22.86
8	26.67
9	30.48
10	34.29
11	38.1
12	41.91
13	45.72
14	49.53
15	53.34
16	57.15
17	60.96
18	64.77
19	68.58
20	72.39

Type	Order No.	Pcs./Pkt.
BCP-381F- 2	54 35 11 6	100
BCP-381F- 3	54 35 12 9	
BCP-381F- 4	54 35 13 2	
BCP-381F- 5	54 35 14 5	
BCP-381F- 6	54 35 15 8	
BCP-381F- 7	54 35 16 1	
BCP-381F- 8	54 35 17 4	
BCP-381F- 9	54 35 18 7	
BCP-381F-10	54 35 19 0	
BCP-381F-11	54 35 20 0	
BCP-381F-12	54 35 21 3	
BCP-381F-13	54 35 22 6	
BCP-381F-14	54 35 23 9	
BCP-381F-15	54 35 24 2	
BCP-381F-16	54 35 25 5	
BCP-381F-17	54 35 26 8	
BCP-381F-18	54 35 27 1	
BCP-381F-19	54 35 28 4	
BCP-381F-20	54 35 29 7	

#### Technical data in accordance with IEC/DIN VDE

Surge voltage category/contamination class	-/-
Rated voltage	[V]
Rated surge voltage	[kV]
Rated current/cross section	[A] [mm <sup>2</sup> ]

III/3	III/2	II/2
160	200	400
2.5	2.5	2.5
8/1.5		

#### Connection capacity

Solid/stranded/conductor sizes	[mm <sup>2</sup> ]/[mm <sup>2</sup> ]/AWG
Stranded with ferrule without/with plastic sleeve	[mm <sup>2</sup> ]

0.2-1.5/0.2-1.5/24-16
0.25-1.5/0.25-0.5

#### Multiple connection (2 conductors with same cross section)

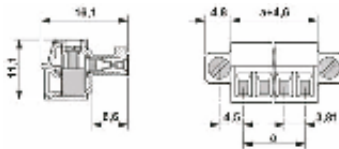
Solid/stranded	[mm <sup>2</sup> ]
Stranded with ferrules without plastic sleeve	[mm <sup>2</sup> ]
Stranded with TWIN ferrule with plastic sleeve	[mm <sup>2</sup> ]
Stripping length	mm
Thread	-
Torque	[lb inch]/[Nm]
Insulation material	
Inflammability class in acc. with UL94	
Approval data	UL: [V]/[A]/AWG
Nominal voltage/ Nominal current/ Connection capacity AWG	CSA: [V]/[A]/AWG

0.2-0.5/0.2-0.75
0.25-0.34
0.5
7
M2
1.95-2.21/0.22-0.25
PA
V0
300/8/30-14
300/8/30-14

#### Dimensions

Pitch	[mm]
-------	------

3.81



# COMBICON compact BC plug connectors

## BC - PCB terminal blocks

### Header

Pitch: 3.5 mm



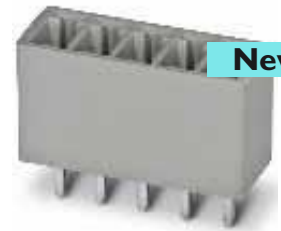
Coding profile CP-BC-M  
Order No. 5436160



New

**BCH-350H-...**  
Conductor connection  
parallel to the pcb

Pitch 3.5 mm  
I U  
[A] [V]  
8 200



New

**BCH-350V-...**  
Plug-in direction vertical to the pcb

Pitch 3.5 mm  
I U  
[A] [V]  
8 200

No. of positions	Dimension a [mm]
	<b>BCH-350</b>
2	3.5
3	7.0
4	10.5
5	14.0
6	17.5
7	21.0
8	24.5
9	28.0
10	31.5
11	35.0
12	38.5
13	42.0
14	45.5
15	49.0
16	52.5
17	56.0
18	59.5
19	63.0
20	66.5

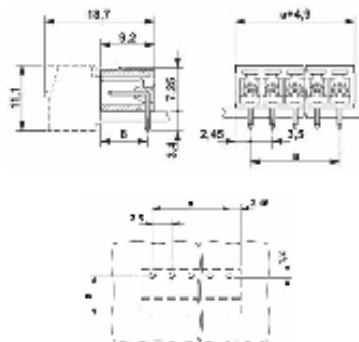
Type	Order No.	Pcs./ Pkt.
BCH-350H- 2	54 30 42 5	100
BCH-350H- 3	54 30 43 8	
BCH-350H- 4	54 30 44 1	
BCH-350H- 5	54 30 45 4	
BCH-350H- 6	54 30 46 7	
BCH-350H- 7	54 30 47 0	
BCH-350H- 8	54 30 48 3	
BCH-350H- 9	54 30 49 6	
BCH-350H-10	54 30 50 6	
BCH-350H-11	54 30 51 9	
BCH-350H-12	54 30 52 2	
BCH-350H-13	54 30 53 5	
BCH-350H-14	54 30 54 8	
BCH-350H-15	54 30 55 1	
BCH-350H-16	54 30 56 4	
BCH-350H-17	54 30 57 7	
BCH-350H-18	54 30 58 0	
BCH-350H-19	54 30 59 3	
BCH-350H-20	54 30 60 3	

Type	Order No.	Pcs./ Pkt.
BCH-350V- 2	54 30 80 7	100
BCH-350V- 3	54 30 81 0	
BCH-350V- 4	54 30 82 3	
BCH-350V- 5	54 30 83 6	
BCH-350V- 6	54 30 84 9	
BCH-350V- 7	54 30 85 2	
BCH-350V- 8	54 30 86 5	
BCH-350V- 9	54 30 87 8	
BCH-350V-10	54 30 88 1	
BCH-350V-11	54 30 89 4	
BCH-350V-12	54 30 90 4	
BCH-350V-13	54 30 91 7	
BCH-350V-14	54 30 92 0	
BCH-350V-15	54 30 93 3	
BCH-350V-16	54 30 94 6	
BCH-350V-17	54 30 95 9	
BCH-350V-18	54 30 96 2	
BCH-350V-19	54 30 97 5	
BCH-350V-20	54 30 98 8	

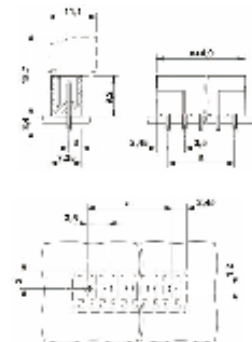
Technical data in accordance with IEC/DIN VDE	
Surge voltage category/contamination class	-/-
Rated voltage	[V]
Rated surge voltage	[kV]
Rated current/cross section	[A] [mm <sup>2</sup> ]
Insulation material	PA
Inflammability class in acc. with UL94	V-0
Approval data	UL: [V]/[A]/AWG
Nominal voltage/ Nominal current/ Connection capacity AWG	CSA: [V]/[A]/AWG
Dimensions	
Pitch	[mm]
Hole diameter	[mm]
Pin dimensions	[mm] x [mm]

III/3	III/2	II/2
160	200	400
2.5	2.5	2.5
8/-		
PA		
V-0		
300/8/-		
300/8/-		
3.81		
1.2		
0.8x0.8		

III/3	III/2	II/2
160	200	400
2.5	2.5	2.5
8/-		
PA		
V-0		
300/8/-		
300/8/-		
3.81		
1.2		
0.8x0.8		

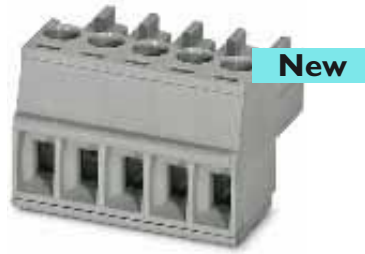


Drilling diagram



Drilling diagram

# COMBICON compact BC plug connectors



## BC - PCB terminal blocks

### Plug

Pitch: 3.5 mm

#### BCP-350...

Plug-in direction parallel  
to the conductor axis Pitch 3.5 mm

(IEC)	solid [mm <sup>2</sup> ]	stranded [mm <sup>2</sup> ]	AWG	I [A]	U [V]
Connection data	0.2-1.5	0.2-1.5	24-16	8	200

No. of positions	Dimension a [mm] BCP-350
2	3.5
3	7.0
4	10.5
5	14.0
6	17.5
7	21.0
8	24.5
9	28.0
10	31.5
11	35.0
12	38.5
13	42.0
14	45.5
15	49.0
16	52.5
17	56.0
18	59.5
19	63.0
20	66.5

Type	Order No.	Pcs./Pkt.
BCP-350-2	54 34 54 4	100
BCP-350-3	54 34 55 7	
BCP-350-4	54 34 56 0	
BCP-350-5	54 34 57 3	
BCP-350-6	54 34 58 6	
BCP-350-7	54 34 59 9	
BCP-350-8	54 34 60 9	
BCP-350-9	54 34 61 2	
BCP-350-10	54 34 62 5	
BCP-350-11	54 34 63 8	
BCP-350-12	54 34 64 1	
BCP-350-13	54 34 65 4	
BCP-350-14	54 34 66 7	
BCP-350-15	54 34 67 0	
BCP-350-16	54 34 68 3	
BCP-350-17	54 34 69 6	
BCP-350-18	54 34 70 6	
BCP-350-19	54 34 71 9	
BCP-350-20	54 34 72 2	

#### Technical data in accordance with IEC/DIN VDE

Surge voltage category/contamination class	-/-
Rated voltage	[V]
Rated surge voltage	[kV]
Rated current/cross section	[A] [mm <sup>2</sup> ]

III/3	III/2	II/2
160	200	400
2.5	2.5	2.5
8/1.5		

#### Connection capacity

Solid/stranded/conductor sizes	[mm <sup>2</sup> ]/[mm <sup>2</sup> ]/AWG
Stranded with ferrule without/with plastic sleeve	[mm <sup>2</sup> ]

0.2-1.5/0.2-1.5/24-16
0.25-1.5/0.25-0.5

#### Multiple connection (2 conductors with same cross section)

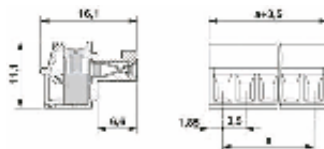
Solid/stranded	[mm <sup>2</sup> ]
Stranded with ferrules without plastic sleeve	[mm <sup>2</sup> ]
Stranded with TWIN ferrule with plastic sleeve	[mm <sup>2</sup> ]
Stripping length	mm
Thread	-
Torque	[lb inch]/[Nm]
Insulation material	
Inflammability class in acc. with UL94	
Approval data	UL: [V]/[A]/AWG
Nominal voltage/ Nominal current/ Connection capacity AWG	CSA: [V]/[A]/AWG

0.2-0.5/0.2-0.75
0.25-0.34
0.5
7
M2
1.95-2.21/0.22-0.25
PA
V0
300/8/30-14
300/8/30-14

#### Dimensions

Pitch	[mm]
-------	------

3.81



# COMBICON compact BC plug connectors

## BC - PCB terminal blocks Header

Pitch: 3.5 mm



Coding profile CP-BC-M  
Order No. 5436160



New

**BCH-350HF-...**  
Header with screw flange

Pitch 3.5 mm  
I U  
[A] [V]  
8 200



New

**BCH-350VF-...**  
Header with screw flange

Pitch 3.5 mm  
I U  
[A] [V]  
8 200

No. of positions	Dimension a [mm]
	<b>BCH-350</b>
2	3.5
3	7.0
4	10.5
5	14.0
6	17.5
7	21.0
8	24.5
9	28.0
10	31.5
11	35.0
12	38.5
13	42.0
14	45.5
15	49.0
16	52.5
17	56.0
18	59.5
19	63.0
20	66.5

Type	Order No.	Pcs./Pkt.
BCH-350HF- 2	54 30 61 6	100
BCH-350HF- 3	54 30 62 9	
BCH-350HF- 4	54 30 63 2	
BCH-350HF- 5	54 30 64 5	
BCH-350HF- 6	54 30 65 8	
BCH-350HF- 7	54 30 66 1	
BCH-350HF- 8	54 30 67 4	
BCH-350HF- 9	54 30 68 7	
BCH-350HF-10	54 30 69 0	
BCH-350HF-11	54 30 70 0	
BCH-350HF-12	54 30 71 3	
BCH-350HF-13	54 30 72 6	
BCH-350HF-14	54 30 73 9	
BCH-350HF-15	54 30 74 2	
BCH-350HF-16	54 30 75 5	
BCH-350HF-17	54 30 76 8	
BCH-350HF-18	54 30 77 1	
BCH-350HF-19	54 30 78 4	
BCH-350HF-20	54 30 79 7	

Type	Order No.	Pcs./Pkt.
BCH-350VF- 2	54 30 99 1	100
BCH-350VF- 3	54 31 00 0	
BCH-350VF- 4	54 31 01 3	
BCH-350VF- 5	54 31 02 6	
BCH-350VF- 6	54 31 03 9	
BCH-350VF- 7	54 31 04 2	
BCH-350VF- 8	54 31 05 5	
BCH-350VF- 9	54 31 06 8	
BCH-350VF-10	54 31 07 1	
BCH-350VF-11	54 31 08 4	
BCH-350VF-12	54 31 09 7	
BCH-350VF-13	54 31 10 7	
BCH-350VF-14	54 31 11 0	
BCH-350VF-15	54 31 12 3	
BCH-350VF-16	54 31 13 6	
BCH-350VF-17	54 31 14 9	
BCH-350VF-18	54 31 15 2	
BCH-350VF-19	54 31 16 5	
BCH-350VF-20	54 31 17 8	

### Technical data in accordance with IEC/DIN VDE

Surge voltage category/contamination class	-/-
Rated voltage	[V]
Rated surge voltage	[kV]
Rated current/cross section	[A] [mm <sup>2</sup> ]
Insulation material	PA
Inflammability class in acc. with UL94	V-0
Approval data	UL: [V]/[A]/AWG
Nominal voltage/ Nominal current/ Connection capacity AWG	CSA: [V]/[A]/AWG

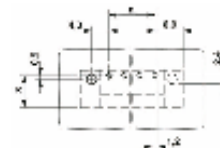
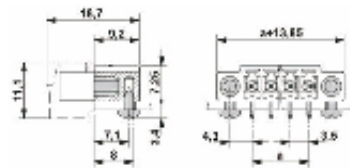
### Dimensions

Pitch	[mm]	3.81
Hole diameter	[mm]	1.2
Pin dimensions	[mm] x [mm]	0.8x0.8

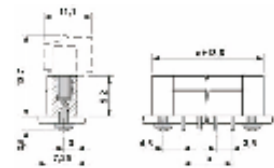
III/3	III/2	II/2
160	200	400
2.5	2.5	2.5
8/-		
PA		
V-0		
300/8/-		
300/8/-		

III/3	III/2	II/2
160	200	400
2.5	2.5	2.5
8/-		
PA		
V-0		
300/8/-		
300/8/-		

Note:  
Mounting screws for BCH-350H(V)F-...:  
Sheet metal screw ISO 1481-ST 2.2 x 4.5 C or ISO 7049-ST 2.2 x 4.5 C.  
A screw connection is only permitted prior to soldering.



Drilling diagram



Drilling diagram

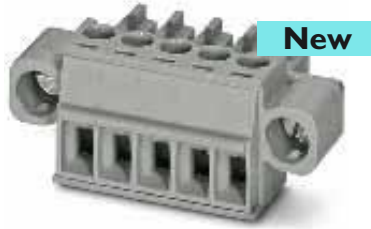


# COMBICON compact BC plug connectors

## BC - PCB terminal blocks

### Plug

Pitch: 3.5 mm



**BCP-350F-...**  
Plug with screw flange

Pitch 3.5 mm

(IEC)	solid [mm <sup>2</sup> ]	stranded [mm <sup>2</sup> ]	AWG	I [A]	U [V]
Connection data	0.2-1.5	0.2-1.5	24-16	8	200

No. of positions	Dimension a [mm] <b>BCP-350</b>
2	3.5
3	7.0
4	10.5
5	14.0
6	17.5
7	21.0
8	24.5
9	28.0
10	31.5
11	35.0
12	38.5
13	42.0
14	45.5
15	49.0
16	52.5
17	56.0
18	59.5
19	63.0
20	66.5

Type	Order No.	Pcs./Pkt.
BCP-350F- 2	54 34 73 5	100
BCP-350F- 3	54 34 74 8	
BCP-350F- 4	54 34 75 1	
BCP-350F- 5	54 34 76 4	
BCP-350F- 6	54 34 77 7	
BCP-350F- 7	54 34 78 0	
BCP-350F- 8	54 34 79 3	
BCP-350F- 9	54 34 80 3	
BCP-350F-10	54 34 81 6	
BCP-350F-11	54 34 82 9	
BCP-350F-12	54 34 83 2	
BCP-350F-13	54 34 84 5	
BCP-350F-14	54 34 85 8	
BCP-350F-15	54 34 86 1	
BCP-350F-16	54 34 87 4	
BCP-350F-17	54 34 88 7	
BCP-350F-18	54 34 89 0	
BCP-350F-19	54 34 90 0	
BCP-350F-20	54 34 91 3	

#### Technical data in accordance with IEC/DIN VDE

Surge voltage category/contamination class	-/-
Rated voltage	[V]
Rated surge voltage	[kV]
Rated current/cross section	[A] [mm <sup>2</sup> ]

III/3	III/2	II/2
160	200	400
2.5	2.5	2.5
8/1.5		

#### Connection capacity

Solid/stranded/conductor sizes	[mm <sup>2</sup> ]/[mm <sup>2</sup> ]/AWG
Stranded with ferrule without/with plastic sleeve	[mm <sup>2</sup> ]

0.2-1.5/0.2-1.5/24-16
0.25-1.5/0.25-0.5

#### Multiple connection (2 conductors with same cross section)

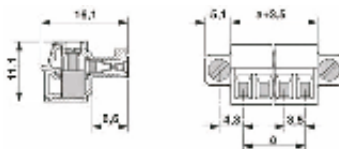
Solid/stranded	[mm <sup>2</sup> ]
Stranded with ferrules without plastic sleeve	[mm <sup>2</sup> ]
Stranded with TWIN ferrule with plastic sleeve	[mm <sup>2</sup> ]
Stripping length	mm
Thread	-
Torque	[lb inch]/[Nm]
Insulation material	
Inflammability class in acc. with UL94	
Approval data	UL: [V]/[A]/AWG
Nominal voltage/ Nominal current/ Connection capacity AWG	CSA: [V]/[A]/AWG

0.2-0.5/0.2-0.75
0.25-0.34
0.5
7
M2
1.95-2.21/0.22-0.25
PA
V0
300/8/30-14
300/8/30-14

#### Dimensions

Pitch	[mm]
-------	------

3.81



# COMBICON compact BC plug connectors

## BC - PCB terminal blocks

### Header

Pitch: 5.08 mm



Coding section CR-BC-M  
Order No. 5436157



**BCH-508HS...**  
Conductor connection  
parallel to the pcb Pitch 5.08 mm



**BCH-508VS...**  
Plug-in direction vertical to the pcb  
Pitch 5.08 mm

No. of positions	Dimension a [mm]	
	BCH-508	BCP-508
2	5.08	5.08
3	10.16	10.16
4	15.24	15.24
5	20.32	20.32
6	25.4	25.4
7	30.48	30.48
8	35.56	35.56
9	40.64	40.64
10	45.72	45.72
11	50.8	50.8
12	55.88	55.88
13	60.96	60.96
14	66.04	66.04
15	71.12	71.12
16	76.2	76.2
17	81.28	81.28
18	86.36	86.36
19	91.44	91.44
20	96.52	96.52
21	101.6	101.6
22	106.68	106.68
23	111.76	111.76
24	116.84	116.84

Type	Order No.	Pcs./ Pkt.	I U	
			[A]	[V]
		100	12	320

Type	Order No.	Pcs./ Pkt.	I U	
			[A]	[V]
		100	12	320

Type	Order No.	Pcs./ Pkt.
BCH-508HS- 2	54 33 66 8	100
BCH-508HS- 3	54 33 67 1	
BCH-508HS- 4	54 33 68 4	
BCH-508HS- 5	54 33 69 7	
BCH-508HS- 6	54 33 70 7	
BCH-508HS- 7	54 33 71 0	
BCH-508HS- 8	54 33 72 3	
BCH-508HS- 9	54 33 73 6	
BCH-508HS-10	54 33 74 9	
BCH-508HS-11	54 33 75 2	
BCH-508HS-12	54 33 76 5	
BCH-508HS-13	54 33 77 8	
BCH-508HS-14	54 33 78 1	
BCH-508HS-15	54 33 79 4	
BCH-508HS-16	54 33 80 4	
BCH-508HS-17	54 33 81 7	
BCH-508HS-18	54 33 82 0	
BCH-508HS-19	54 33 83 3	
BCH-508HS-20	54 33 84 6	
BCH-508HS-21	54 33 85 9	
BCH-508HS-22	54 33 86 2	
BCH-508HS-23	54 33 87 5	
BCH-508HS-24	54 33 88 8	

Type	Order No.	Pcs./ Pkt.
BCH-508VS- 2	54 34 31 1	100
BCH-508VS- 3	54 34 32 4	
BCH-508VS- 4	54 34 33 7	
BCH-508VS- 5	54 34 34 0	
BCH-508VS- 6	54 34 35 3	
BCH-508VS- 7	54 34 36 6	
BCH-508VS- 8	54 34 37 9	
BCH-508VS- 9	54 34 38 2	
BCH-508VS-10	54 34 39 5	
BCH-508VS-11	54 34 40 5	
BCH-508VS-12	54 34 41 8	
BCH-508VS-13	54 34 42 1	
BCH-508VS-14	54 34 43 4	
BCH-508VS-15	54 34 44 7	
BCH-508VS-16	54 34 45 0	
BCH-508VS-17	54 34 46 3	
BCH-508VS-18	54 34 47 6	
BCH-508VS-19	54 34 48 9	
BCH-508VS-20	54 34 49 2	
BCH-508VS-21	54 34 50 2	
BCH-508VS-22	54 34 51 5	
BCH-508VS-23	54 34 52 8	
BCH-508VS-24	54 34 53 1	

#### Technical data in accordance with IEC/DIN VDE

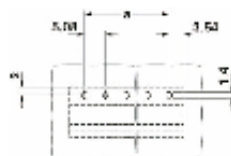
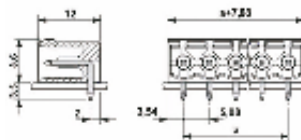
Surge voltage category/contamination class	-/-
Rated voltage	[V]
Rated surge voltage	[kV]
Rated current/cross section	[A] [mm²]
Insulation material	
Inflammability class in acc. with UL94	
Approval data	UL: [V]/[A]/AWG
Nominal voltage/ Nominal current/ Connection capacity AWG	CSA: [V]/[A]/AWG

#### Dimensions

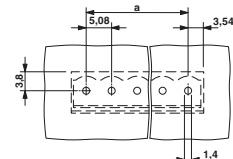
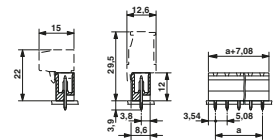
Pitch	[mm]
Hole diameter	[mm]
Pin dimensions	[mm] x [mm]

III/3	III/2	II/2
250	320	630
4	4	4
12/-		
PA		
V0		
300/10/-		
300/10/-		

III/3	III/2	II/2
250	320	630
4	4	4
12/-		
PA		
V0		
300/10/-		
300/10/-		



Drilling diagram



Drilling diagram



**BCH-508H...**

Header without side wall

Conductor connection

parallel to the pcb

Pitch 5.08 mm

I	U
[A]	[V]
12	320



**BCH-508V...**

Header without side wall

Plug-in direction vertical to the pcb

Pitch 5.08 mm

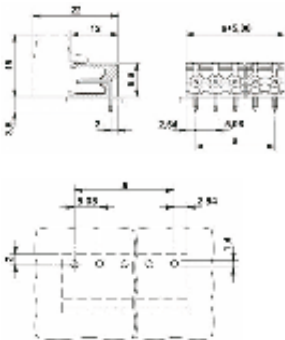
I	U
[A]	[V]
12	320

Type	Order No.	Pcs./ Pkt.
BCH-508H- 2	54 33 24 4	100
BCH-508H- 3	54 33 25 7	
BCH-508H- 4	54 33 26 0	
BCH-508H- 5	54 33 27 3	
BCH-508H- 6	54 33 28 6	
BCH-508H- 7	54 33 29 9	
BCH-508H- 8	54 33 30 9	
BCH-508H- 9	54 33 31 2	
BCH-508H-10	54 33 32 5	
BCH-508H-11	54 33 33 8	
BCH-508H-12	54 33 34 1	
BCH-508H-13	54 33 35 4	
BCH-508H-14	54 33 36 7	
BCH-508H-15	54 33 37 0	
BCH-508H-16	54 33 38 3	
BCH-508H-17	54 33 39 6	
BCH-508H-18	54 33 40 6	
BCH-508H-19	54 33 41 9	
BCH-508H-20	54 33 42 2	
BCH-508H-21	54 33 43 5	
BCH-508H-22	54 33 44 8	
BCH-508H-23	54 33 45 1	
BCH-508H-24	54 33 46 4	

Type	Order No.	Pcs./ Pkt.
BCH-508V- 2	54 33 89 1	100
BCH-508V- 3	54 33 90 1	
BCH-508V- 4	54 33 91 4	
BCH-508V- 5	54 33 92 7	
BCH-508V- 6	54 33 93 0	
BCH-508V- 7	54 33 94 3	
BCH-508V- 8	54 33 95 6	
BCH-508V- 9	54 33 96 9	
BCH-508V-10	54 33 97 2	
BCH-508V-11	54 33 98 5	
BCH-508V-12	54 33 99 8	
BCH-508V-13	54 34 00 7	
BCH-508V-14	54 34 01 0	
BCH-508V-15	54 34 02 3	
BCH-508V-16	54 34 03 6	
BCH-508V-17	54 34 04 9	
BCH-508V-18	54 34 05 2	
BCH-508V-19	54 34 06 5	
BCH-508V-20	54 34 07 8	
BCH-508V-21	54 34 08 1	
BCH-508V-22	54 34 09 4	
BCH-508V-23	54 34 10 4	
BCH-508V-24	54 34 11 7	

III/3	III/2	II/2
250	320	630
4	4	4
12/-		
PA		
V0		
300/10/-		
300/10/-		
5.08		
1.4		
1x1		

III/3	III/2	II/2
250	320	630
4	4	4
12/-		
PA		
V0		
300/10/-		
300/10/-		
5.08		
1.4		
1x1		



Drilling diagram



Drilling diagram

# COMBICON compact BC plug connectors

## BC - PCB terminal blocks

### Header

Pitch: 5.08 mm



Coding section CR-BC-M  
Order No. 5436157

No. of positions	Dimension a [mm]	BCH-508
2	5.08	
3	10.16	
4	15.24	
5	20.32	
6	25.4	
7	30.48	
8	35.56	
9	40.64	
10	45.72	
11	50.8	
12	55.88	
13	60.96	
14	66.04	
15	71.12	
16	76.2	
17	81.28	
18	86.36	
19	91.44	
20	96.52	

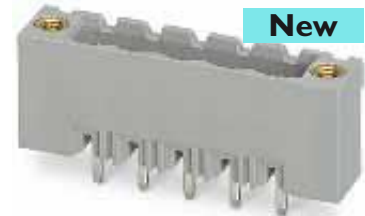


New

**BCH-508HF-...**  
Conductor connection  
parallel to the pcb Pitch 5.08 mm

	I [A]	U [V]
	12	320

Type	Order No.	Pcs./Pkt.
BCH-508HF- 2	54 33 47 7	100
BCH-508HF- 3	54 33 48 0	
BCH-508HF- 4	54 33 49 3	
BCH-508HF- 5	54 33 50 3	
BCH-508HF- 6	54 33 51 6	
BCH-508HF- 7	54 33 52 9	
BCH-508HF- 8	54 33 53 2	
BCH-508HF- 9	54 33 54 5	
BCH-508HF-10	54 33 55 8	
BCH-508HF-11	54 33 56 1	
BCH-508HF-12	54 33 57 4	
BCH-508HF-13	54 33 58 7	
BCH-508HF-14	54 33 59 0	
BCH-508HF-15	54 33 60 0	
BCH-508HF-16	54 33 61 3	
BCH-508HF-17	54 33 62 6	
BCH-508HF-18	54 33 63 9	
BCH-508HF-19	54 33 64 2	
BCH-508HF-20	54 33 65 5	



New

**BCH-508VF-...**  
Plug-in direction vertical to the pcb  
Pitch 5.08 mm

	I [A]	U [V]
	12	320

Type	Order No.	Pcs./Pkt.
BCH-508VF- 2	54 34 12 0	100
BCH-508VF- 3	54 34 13 3	
BCH-508VF- 4	54 34 14 6	
BCH-508VF- 5	54 34 15 9	
BCH-508VF- 6	54 34 16 2	
BCH-508VF- 7	54 34 17 5	
BCH-508VF- 8	54 34 18 8	
BCH-508VF- 9	54 34 19 1	
BCH-508VF-10	54 34 20 1	
BCH-508VF-11	54 34 21 4	
BCH-508VF-12	54 34 22 7	
BCH-508VF-13	54 34 23 0	
BCH-508VF-14	54 34 24 3	
BCH-508VF-15	54 34 25 6	
BCH-508VF-16	54 34 26 9	
BCH-508VF-17	54 34 27 2	
BCH-508VF-18	54 34 28 5	
BCH-508VF-19	54 34 29 8	
BCH-508VF-20	54 34 30 8	

#### Technical data in accordance with IEC/DIN VDE

Surge voltage category/contamination class	-/-
Rated voltage	[V]
Rated surge voltage	[kV]
Rated current/cross section	[A] [mm <sup>2</sup> ]
Insulation material	PA
Inflammability class in acc. with UL94	V0
Approval data	UL: [V]/[A]/AWG
Nominal voltage/ Nominal current/ Connection capacity AWG	CSA: [V]/[A]/AWG

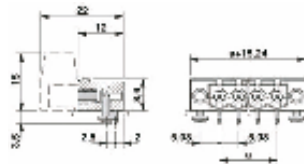
#### Dimensions

Pitch	[mm]	5.08
Hole diameter	[mm]	1.4
Pin dimensions	[mm] x [mm]	1x1

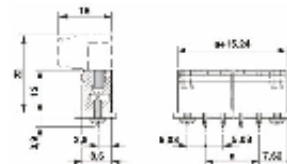
III/3	III/2	II/2
250	320	630
4	4	4
12		
PA		
V0		
300/10/-		
300/10/-		

III/3	III/2	II/2
250	320	630
4	4	4
12		
PA		
V0		
300/10/-		
300/10/-		

Note:  
Mounting screws for BCH-508H(V)F-...:  
Sheet metal screw ISO 1481-ST 2.2 x 6.5 C or ISO 7049-ST 2.2 x 6.5 C.  
A screw connection is only permitted prior to soldering.



Drilling diagram



Drilling diagram

# COMBICON compact BC plug connectors

## BC - PCB terminal blocks

### Plug

Pitch: 5.08 mm



Coding profile CP-BC-F  
Order No. 5436144

No. of positions	Dimension a [mm]
2	5.08
3	10.16
4	15.24
5	20.32
6	25.4
7	30.48
8	35.56
9	40.64
10	45.72
11	50.8
12	55.88
13	60.96
14	66.04
15	71.12
16	76.2
17	81.28
18	86.36
19	91.44
20	96.52
21	101.6
22	106.68
23	111.76
24	116.84



**BCP-508-...**  
Plug-in direction parallel  
to the conductor axis Pitch 5.08 mm

(IEC)	solid [mm <sup>2</sup> ]	stranded [mm <sup>2</sup> ]	AWG	I [A]	U [V]
Connection data	0.2-2.5	0.2-2.5	24-12	12	320

Type	Order No.	Pcs./ Pkt.
BCP-508- 2	54 35 72 1	100
BCP-508- 3	54 35 73 4	
BCP-508- 4	54 35 74 7	
BCP-508- 5	54 35 75 0	
BCP-508- 6	54 35 76 3	
BCP-508- 7	54 35 77 6	
BCP-508- 8	54 35 78 9	
BCP-508- 9	54 35 79 2	
BCP-508-10	54 35 80 2	
BCP-508-11	54 35 81 5	
BCP-508-12	54 35 82 8	
BCP-508-13	54 35 83 1	
BCP-508-14	54 35 84 4	
BCP-508-15	54 35 85 7	
BCP-508-16	54 35 86 0	
BCP-508-17	54 35 87 3	
BCP-508-18	54 35 88 6	
BCP-508-19	54 35 89 9	
BCP-508-20	54 35 90 9	
BCP-508-21	54 35 91 2	
BCP-508-22	54 35 92 5	
BCP-508-23	54 35 93 8	
BCP-508-24	54 35 94 1	



**BCP-508F-...**  
Header with screw flange  
Pitch 5.08 mm

(IEC)	solid [mm <sup>2</sup> ]	stranded [mm <sup>2</sup> ]	AWG	I [A]	U [V]
Connection data	0.2-2.5	0.2-2.5	24-12	12	320

Type	Order No.	Pcs./ Pkt.
BCP-508F- 2	54 35 95 4	100
BCP-508F- 3	54 35 96 7	
BCP-508F- 4	54 35 97 0	
BCP-508F- 5	54 35 98 3	
BCP-508F- 6	54 35 99 6	
BCP-508F- 7	54 36 00 5	
BCP-508F- 8	54 36 01 8	
BCP-508F- 9	54 36 02 1	
BCP-508F-10	54 36 03 4	
BCP-508F-11	54 36 04 7	
BCP-508F-12	54 36 05 0	
BCP-508F-13	54 36 06 3	
BCP-508F-14	54 36 07 6	
BCP-508F-15	54 36 08 9	
BCP-508F-16	54 36 09 2	
BCP-508F-17	54 36 10 2	
BCP-508F-18	54 36 11 5	
BCP-508F-19	54 36 12 8	
BCP-508F-20	54 36 13 1	

#### Technical data in accordance with IEC/DIN VDE

Surge voltage category/contamination class	-/-
Rated voltage	[V]
Rated surge voltage	[kV]
Rated current/cross section	[A] [mm <sup>2</sup> ]

#### Connection capacity

Solid/stranded/conductor sizes	[mm <sup>2</sup> ]/[mm <sup>2</sup> ]/AWG
Stranded with ferrule without/with plastic sleeve	[mm <sup>2</sup> ]

#### Multiple connection (2 conductors with same cross section)

Solid/stranded	[mm <sup>2</sup> ]
Stranded with ferrules without plastic sleeve	[mm <sup>2</sup> ]
Stranded with TWIN ferrule with plastic sleeve	[mm <sup>2</sup> ]
Stripping length	mm
Thread	-
Torque	[lb inch]/[Nm]
Insulation material	
Inflammability class in acc. with UL94	
Approval data	UL: [V]/[A]/AWG
Nominal voltage/ Nominal current/ Connection capacity AWG	CSA: [V]/[A]/AWG

#### Dimensions

Pitch	[mm]
-------	------

III/3	III/2	II/2
250	320	630
4	4	4
12/2.5		

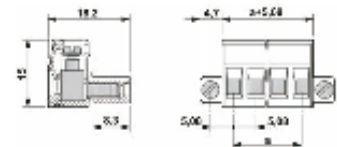
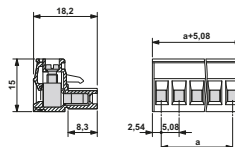
0.2-2.5/0.2-2.5/24-12
0.25-2.5/0.25-2.5

0.2-1/0.2-1.5
0.25-1
0.5-1.5
7
M3
3.54 lb inch/0.4 Nm
PA
V0
300/10/30-12
300/10/30-12

III/3	III/2	II/2
250	320	630
4	4	4
12/2.5		

0.2-2.5/0.2-2.5/24-12
0.25-2.5/0.25-2.5

0.2-1/0.2-1.5
0.25-1
0.5-1.5
7
M3
3.54 lb inch/0.4 Nm
PA
V0
300/10/30-12
300/10/30-12



# COMBICON compact BC plug connectors

## BC - PCB terminal blocks

### Header

Pitch: 5.0 mm



Coding section CR-BC-M  
Order No. 5436157

No. of positions	Dimension a [mm] <b>BCH-500</b>
2	5.0
3	10.0
4	15.0
5	20.0
6	25.0
7	30.0
8	35.0
9	40.0
10	45.0
11	50.0
12	55.0
13	60.0
14	65.0
15	70.0
16	75.0
17	80.0
18	85.0
19	90.0
20	95.0
21	100.0
22	105.0
23	110.0
24	115.0

Technical data in accordance with IEC/DIN VDE	
Surge voltage category/contamination class	-/-
Rated voltage	[V]
Rated surge voltage	[kV]
Rated current/cross section	[A] [mm <sup>2</sup> ]
Insulation material	PA
Inflammability class in acc. with UL94	V0
Approval data	UL: [V]/[A]/AWG
Nominal voltage/ Nominal current/ Connection capacity AWG	CSA: [V]/[A]/AWG
Dimensions	
Pitch	[mm]
Hole diameter	[mm]
Pin dimensions	[mm] x [mm]



New

**BCH-500HS-...**  
Conductor connection parallel to the pcb

Pitch 5.0 mm

Type	Order No.	Pcs./ Pkt.	I U	
			[A]	[V]
BCH-500HS- 2	54 32 63 0	100	12	320
BCH-500HS- 3	54 32 73 7			
BCH-500HS- 4	54 32 83 4			
BCH-500HS- 5	54 32 93 1			
BCH-500HS- 6	54 32 04 1			
BCH-500HS- 7	54 32 14 8			
BCH-500HS- 8	54 32 24 5			
BCH-500HS- 9	54 32 34 2			
BCH-500HS-10	54 32 44 9			
BCH-500HS-11	54 32 54 6			
BCH-500HS-12	54 32 64 3			
BCH-500HS-13	54 32 74 0			
BCH-500HS-14	54 32 84 7			
BCH-500HS-15	54 32 94 4			
BCH-500HS-16	54 32 05 1			
BCH-500HS-17	54 32 15 8			
BCH-500HS-18	54 32 25 5			
BCH-500HS-19	54 32 35 2			
BCH-500HS-20	54 32 45 9			
BCH-500HS-21	54 32 55 6			
BCH-500HS-22	54 32 65 3			
BCH-500HS-23	54 32 75 0			
BCH-500HS-24	54 32 85 7			

Technical data in accordance with IEC/DIN VDE			
Surge voltage category/contamination class	III/3	III/2	II/2
Rated voltage	250	320	630
Rated surge voltage	4	4	4
Rated current/cross section	12/-		
Insulation material	PA		
Inflammability class in acc. with UL94	V0		
Approval data	300/10/-		
Nominal voltage/ Nominal current/ Connection capacity AWG	300/10/-		
Dimensions			
Pitch	5.0		
Hole diameter	1.4		
Pin dimensions	1x1		



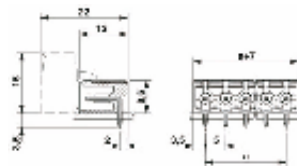
New

**BCH-500VS-...**  
Plug-in direction vertical to the pcb

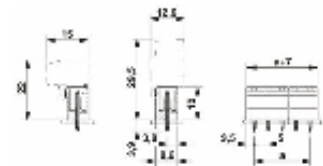
Pitch 5.0 mm

Type	Order No.	Pcs./ Pkt.	I U	
			[A]	[V]
BCH-500VS- 2	54 33 01 1	100	12	320
BCH-500VS- 3	54 33 02 4			
BCH-500VS- 4	54 33 03 7			
BCH-500VS- 5	54 33 04 0			
BCH-500VS- 6	54 33 05 3			
BCH-500VS- 7	54 33 06 6			
BCH-500VS- 8	54 33 07 9			
BCH-500VS- 9	54 33 08 2			
BCH-500VS-10	54 33 09 5			
BCH-500VS-11	54 33 10 8			
BCH-500VS-12	54 33 11 1			
BCH-500VS-13	54 33 12 4			
BCH-500VS-14	54 33 13 7			
BCH-500VS-15	54 33 14 0			
BCH-500VS-16	54 33 15 3			
BCH-500VS-17	54 33 16 6			
BCH-500VS-18	54 33 17 9			
BCH-500VS-19	54 33 18 2			
BCH-500VS-20	54 33 19 5			
BCH-500VS-21	54 33 20 8			
BCH-500VS-22	54 33 21 1			
BCH-500VS-23	54 33 22 4			
BCH-500VS-24	54 33 23 7			

Technical data in accordance with IEC/DIN VDE			
Surge voltage category/contamination class	III/3	III/2	II/2
Rated voltage	250	320	630
Rated surge voltage	4	4	4
Rated current/cross section	12/-		
Insulation material	PA		
Inflammability class in acc. with UL94	V0		
Approval data	300/10/-		
Nominal voltage/ Nominal current/ Connection capacity AWG	300/10/-		
Dimensions			
Pitch	5.0		
Hole diameter	1.4		
Pin dimensions	1x1		



Drilling diagram



Drilling diagram



**New**

**BCH-500H...**  
Header without side wall  
Conductor connection  
parallel to the pcb Pitch 5.0 mm

I	U
[A]	[V]
12	320



**New**

**BCH-500V...**  
Header without side wall  
Plug-in direction vertical to the pcb  
Pitch 5.0 mm

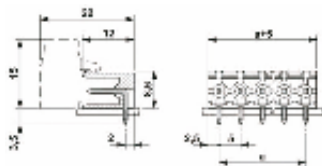
I	U
[A]	[V]
12	320

Type	Order No.	Pcs./ Pkt.
BCH-500H- 2	54 31 94 5	100
BCH-500H- 3	54 31 95 8	
BCH-500H- 4	54 31 96 1	
BCH-500H- 5	54 31 97 4	
BCH-500H- 6	54 31 98 7	
BCH-500H- 7	54 31 99 0	
BCH-500H- 8	54 32 00 9	
BCH-500H- 9	54 32 10 6	
BCH-500H-10	54 32 20 3	
BCH-500H-11	54 32 30 0	
BCH-500H-12	54 32 40 7	
BCH-500H-13	54 32 50 4	
BCH-500H-14	54 32 60 1	
BCH-500H-15	54 32 70 8	
BCH-500H-16	54 32 80 5	
BCH-500H-17	54 32 90 2	
BCH-500H-18	54 32 01 2	
BCH-500H-19	54 32 11 9	
BCH-500H-20	54 32 21 6	
BCH-500H-21	54 32 31 3	
BCH-500H-22	54 32 41 0	
BCH-500H-23	54 32 51 7	
BCH-500H-24	54 32 61 4	

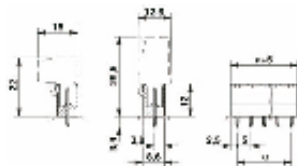
Type	Order No.	Pcs./ Pkt.
BCH-500V- 2	54 32 95 7	100
BCH-500V- 3	54 32 06 7	
BCH-500V- 4	54 32 16 4	
BCH-500V- 5	54 32 26 1	
BCH-500V- 6	54 32 36 8	
BCH-500V- 7	54 32 46 5	
BCH-500V- 8	54 32 56 2	
BCH-500V- 9	54 32 66 9	
BCH-500V-10	54 32 76 6	
BCH-500V-11	54 32 86 3	
BCH-500V-12	54 32 96 0	
BCH-500V-13	54 32 07 0	
BCH-500V-14	54 32 17 7	
BCH-500V-15	54 32 27 4	
BCH-500V-16	54 32 37 1	
BCH-500V-17	54 32 47 8	
BCH-500V-18	54 32 57 5	
BCH-500V-19	54 32 67 2	
BCH-500V-20	54 32 77 9	
BCH-500V-21	54 32 87 6	
BCH-500V-22	54 32 97 3	
BCH-500V-23	54 32 08 3	
BCH-500V-24	54 32 18 0	

III/3	III/2	II/2
250	320	630
4	4	4
12/-		
PA		
V0		
300/10/-		
300/10/-		
5.0		
1.4		
1x1		

III/3	III/2	II/2
250	320	630
4	4	4
12/-		
PA		
V0		
300/10/-		
300/10/-		
5.0		
1.4		
1x1		



Drilling diagram



Drilling diagram

# COMBICON compact BC plug connectors

## BC - PCB terminal blocks

Header  
Pitch: 5.0 mm



Coding section CR-BC-M  
Order No. 5436157

No. of positions	Dimension a [mm] <b>BCH-500F</b>
2	5.0
3	10.0
4	15.0
5	20.0
6	25.0
7	30.0
8	35.0
9	40.0
10	45.0
11	50.0
12	55.0
13	60.0
14	65.0
15	70.0
16	75.0
17	80.0
18	85.0
19	90.0
20	95.0



New

**BCH-500HF-...**  
Conductor connection  
parallel to the pcb  
Pitch 5.0 mm

	I [A]	U [V]
	12	320

Type	Order No.	Pcs./Pkt.
BCH-500HF- 2	54 32 71 1	100
BCH-500HF- 3	54 32 81 8	
BCH-500HF- 4	54 32 91 5	
BCH-500HF- 5	54 32 02 5	
BCH-500HF- 6	54 32 12 2	
BCH-500HF- 7	54 32 22 9	
BCH-500HF- 8	54 32 32 6	
BCH-500HF- 9	54 32 42 3	
BCH-500HF-10	54 32 52 0	
BCH-500HF-11	54 32 62 7	
BCH-500HF-12	54 32 72 4	
BCH-500HF-13	54 32 82 1	
BCH-500HF-14	54 32 92 8	
BCH-500HF-15	54 32 03 8	
BCH-500HF-16	54 32 13 5	
BCH-500HF-17	54 32 23 2	
BCH-500HF-18	54 32 33 9	
BCH-500HF-19	54 32 43 6	
BCH-500HF-20	54 32 53 3	



New

**BCH-500VF-...**  
Plug-in direction vertical to the pcb  
Pitch 5.0 mm

	I [A]	U [V]
	12	320

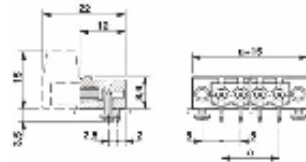
Type	Order No.	Pcs./Pkt.
BCH-500VF- 2	54 32 28 7	100
BCH-500VF- 3	54 32 38 4	
BCH-500VF- 4	54 32 48 1	
BCH-500VF- 5	54 32 58 8	
BCH-500VF- 6	54 32 68 5	
BCH-500VF- 7	54 32 78 2	
BCH-500VF- 8	54 32 88 9	
BCH-500VF- 9	54 32 98 6	
BCH-500VF-10	54 32 09 6	
BCH-500VF-11	54 32 19 3	
BCH-500VF-12	54 32 29 0	
BCH-500VF-13	54 32 39 7	
BCH-500VF-14	54 32 49 4	
BCH-500VF-15	54 32 59 1	
BCH-500VF-16	54 32 69 8	
BCH-500VF-17	54 32 79 5	
BCH-500VF-18	54 32 89 2	
BCH-500VF-19	54 32 99 9	
BCH-500VF-20	54 33 00 8	

Technical data in accordance with IEC/DIN VDE	
Surge voltage category/contamination class	-/-
Rated voltage	[V]
Rated surge voltage	[kV]
Rated current/cross section	[A] [mm <sup>2</sup> ]
Insulation material	
Inflammability class in acc. with UL94	
Approval data	UL: [V]/[A]/AWG
Nominal voltage/ Nominal current/ Connection capacity AWG	CSA: [V]/[A]/AWG
Dimensions	
Pitch	[mm]
Hole diameter	[mm]
Pin dimensions	[mm] x [mm]

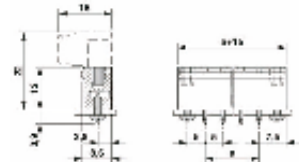
III/3	III/2	II/2
250	320	630
4	4	4
12/-		
PA		
V0		
300/10/-		
300/10/-		
5.0		
1.4		
1x1		

III/3	III/2	II/2
250	320	630
4	4	4
12/-		
PA		
V0		
300/10/-		
300/10/-		
5.0		
1.4		
1x1		

Note:  
Mounting screws for BCH-500H(V)F-...:  
Sheet metal screw ISO 1481-ST 2.2 x 6.5 C or ISO 7049-ST 2.2 x 6.5 C.  
A screw connection is only permitted prior to soldering.



Drilling diagram



Drilling diagram



# COMBICON compact BC plug connectors

## BC - PCB terminal blocks

### Plug

Pitch: 5.08 mm



Coding profile CP-BC-F  
Order No. 5436144

No. of positions	Dimension a [mm]
	<b>BCP-500</b>
2	5.0
3	10.0
4	15.0
5	20.0
6	25.0
7	30.0
8	35.0
9	40.0
10	45.0
11	50.0
12	55.0
13	60.0
14	65.0
15	70.0
16	75.0
17	80.0
18	85.0
19	90.0
20	95.0
21	100.0
22	105.0
23	110.0
24	115.0

### Technical data in accordance with IEC/DIN VDE

Surge voltage category/contamination class	-/-
Rated voltage	[V]
Rated surge voltage	[kV]
Rated current/cross section	[A] [mm <sup>2</sup> ]

### Connection capacity

Solid/stranded/conductor sizes	[mm <sup>2</sup> ]/[mm <sup>2</sup> ]/AWG
Stranded with ferrule without/with plastic sleeve	[mm <sup>2</sup> ]

### Multiple connection (2 conductors with same cross section)

Solid/stranded	[mm <sup>2</sup> ]
Stranded with ferrules without plastic sleeve	[mm <sup>2</sup> ]
Stranded with TWIN ferrule with plastic sleeve	[mm <sup>2</sup> ]
Stripping length	mm
Thread	-
Torque	[lb inch]/[Nm]
Insulation material	
Inflammability class in acc. with UL94	
Approval data	UL: [V]/[A]/AWG
Nominal voltage/ Nominal current/ Connection capacity AWG	CSA: [V]/[A]/AWG

### Dimensions

Pitch	[mm]
-------	------



New

**BCP-500-...**  
Plug-in direction parallel to the conductor axis

Pitch 5.0 mm

(IEC)	solid [mm <sup>2</sup> ]	stranded [mm <sup>2</sup> ]	AWG	I [A]	U [V]
Connection data	0.2-2.5	0.2-2.5	24-12	12	320

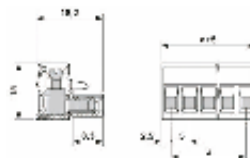
Type	Order No.	Pcs./ Pkt.
BCP-500- 2	54 35 30 7	100
BCP-500- 3	54 35 31 0	
BCP-500- 4	54 35 32 3	
BCP-500- 5	54 35 33 6	
BCP-500- 6	54 35 34 9	
BCP-500- 7	54 35 35 2	
BCP-500- 8	54 35 36 5	
BCP-500- 9	54 35 37 8	
BCP-500-10	54 35 38 1	
BCP-500-11	54 35 39 4	
BCP-500-12	54 35 40 4	
BCP-500-13	54 35 41 7	
BCP-500-14	54 35 42 0	
BCP-500-15	54 35 43 3	
BCP-500-16	54 35 44 6	
BCP-500-17	54 35 45 9	
BCP-500-18	54 35 46 2	
BCP-500-19	54 35 47 5	
BCP-500-20	54 35 48 8	
BCP-500-21	54 35 49 1	
BCP-500-22	54 35 50 1	
BCP-500-23	54 35 51 4	
BCP-500-24	54 35 52 7	

III/3	III/2	II/2
250	320	630
4	4	4
12/2.5		

0.2-2.5/0.2-2.5/24-12
0.25-2.5/0.25-2.5

0.2-1/0.2-1.5
0.25-1
0.5-1.5
7
M3
3.54 lb inch/0.4 Nm
PA
V0
300/10/30-12
300/10/30-12

5.0
-----



New

**BCP-500F-...**  
Header with screw flange

(IEC)	solid [mm <sup>2</sup> ]	stranded [mm <sup>2</sup> ]	AWG	I [A]	U [V]
Connection data	0.2-2.5	0.2-2.5	24-12	12	320

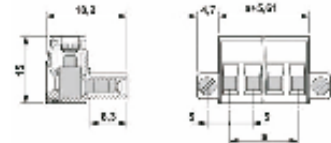
Type	Order No.	Pcs./ Pkt.
BCP-500F- 2	54 35 53 0	100
BCP-500F- 3	54 35 54 3	
BCP-500F- 4	54 35 55 6	
BCP-500F- 5	54 35 56 9	
BCP-500F- 6	54 35 57 2	
BCP-500F- 7	54 35 58 5	
BCP-500F- 8	54 35 59 8	
BCP-500F- 9	54 35 60 8	
BCP-500F-10	54 35 61 1	
BCP-500F-11	54 35 62 4	
BCP-500F-12	54 35 63 7	
BCP-500F-13	54 35 64 0	
BCP-500F-14	54 35 65 3	
BCP-500F-15	54 35 66 6	
BCP-500F-16	54 35 67 9	
BCP-500F-17	54 35 68 2	
BCP-500F-18	54 35 69 5	
BCP-500F-19	54 35 70 5	
BCP-500F-20	54 35 71 8	

III/3	III/2	II/2
250	320	630
4	4	4
12/2.5		

0.2-2.5/0.2-2.5/24-12
0.25-2.5/0.25-2.5

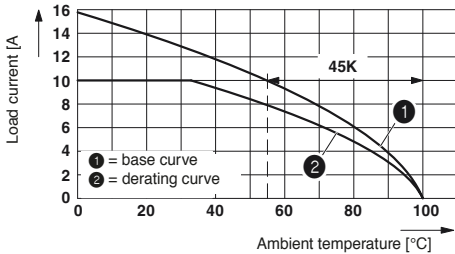
0.2-1/0.2-1.5
0.25-1
0.5-1.5
7
M3
3.54 lb inch/0.4 Nm
PA
V0
300/10/30-12
300/10/30-12

5.0
-----



## Technical information

### Base curve and derating curve, test setup, ambient temperature



The technical data shows a rated current strength that does not impair the functionality when the applied ambient temperature and the corresponding conductor cross section are taken into account, or does not cause a thermal damage to the item. Here, “ambient temperature” refers to the temperature measured in the immediate vicinity of the terminal block. In the application, it is necessary to consider heat sources near the terminal block (e.g. high-load resistors or similar) in particular, which have an effect on the terminal block through radiant heat and/or heat conduction over the conductor path.

EN 60998-1 “Connecting devices for low-voltage circuits for household and similar uses” limits the permissible heating of the conductive parts of terminal points to 45 K.

When the upper temperature limit of the insulation material, here, always assumed to be 100°C, is taken into account, these values yield a current carrying capacity dependent on the ambient temperature: the so-called base curve. Here, the current carrying capacity curve documented according to DIN EN 60512-5-2 shows a current for connectors that has been reduced by a derating factor of 0.8 from the base curve in the so called derating curve. For Phoenix Contact PCB terminal blocks, the so-called base curve can be used for the current carrying capacity without the derating factor.

## Current carrying capacity

The regulation IEC 60947-7-1/EN 60947-7-1/DIN VDE 0611-1 defines the test currents specified in the adjacent table for the individual conductor cross-sections. The corresponding

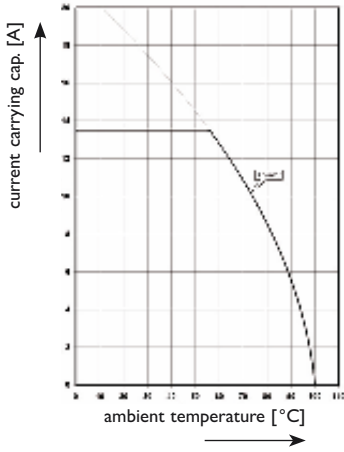
currents are listed in the connection data of the individual terminal blocks. They form the basis for the type test of modular terminal blocks.

Test current according to IEC 60 947-7-1:1989/EN 60 947-7-1:1991

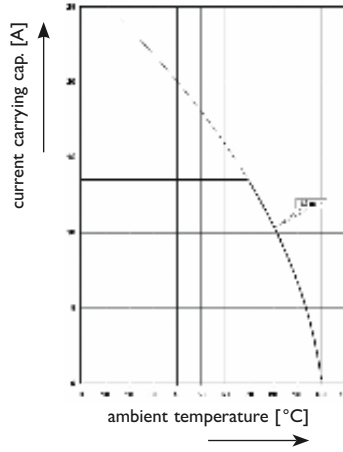
Cross section [mm <sup>2</sup> ]	0.2	0.5	0.75	1.0	1.5	2.5	4	6	10	16
Test current [A]	4	6	9	13.5	17.5	24	32	41	57	76

# Derating curves

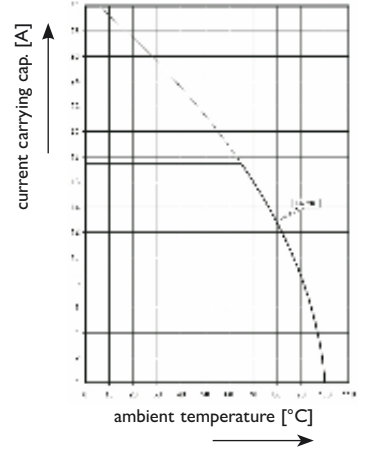
**BC-350X9-...  
BC-381X9-...**



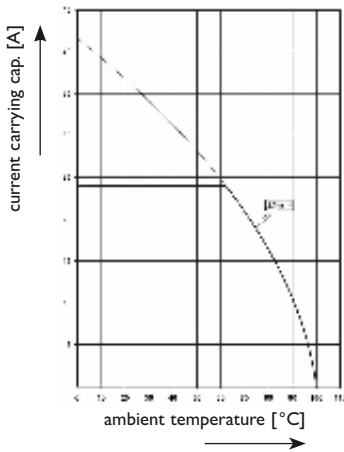
**BC-500X10  
BC-508X10**



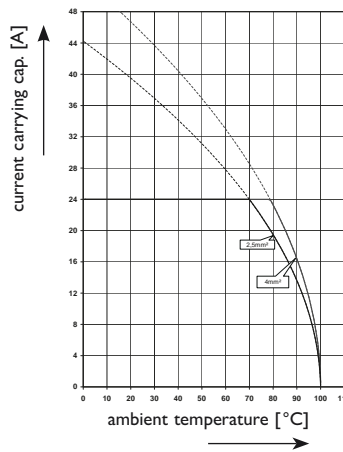
**BC-500X14  
BC-508X14**



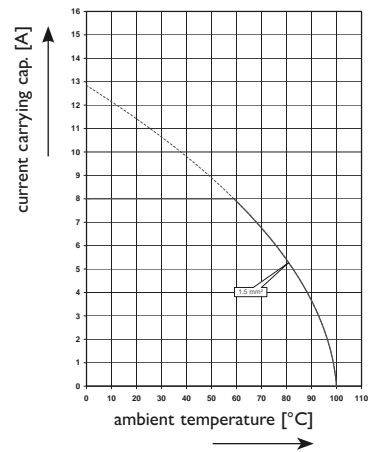
**BC-500X18  
BC-508X18**



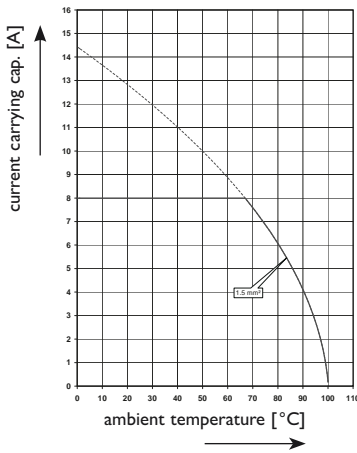
**BCA-500X18-...**



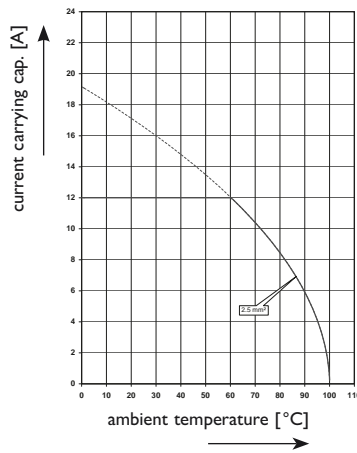
**BCP-350(381)(F)-... with  
BCH-350(381)H(F)-...**



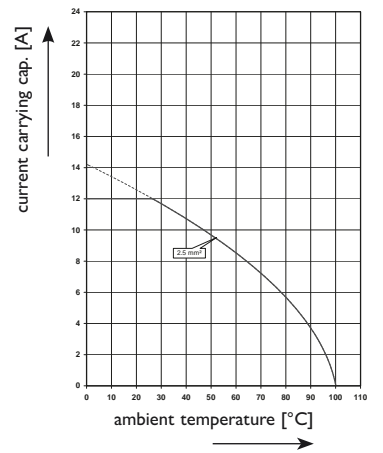
**BCP-350(381)(F)-... with  
BCH-350(381)V(F)-...**



**BCP-500(508)(F)-... with  
BCH-500(508)H(F)(S)-...**



**BCP-500(508)(F)-... with  
BCH-500(508)V(F)(S)-...**



Further information on the products introduced here and on the world of solutions from Phoenix Contact can be found at [www.catalog.phoenixcontact.com](http://www.catalog.phoenixcontact.com)



Or contact us directly!



Industrial Connection Systems,  
Marking and Mounting Material  
**CLIPLINE**



Industrial Plug Connectors  
**PLUSCON**



PCB Connection Systems  
and Electronic Housings  
**COMBICON**



Surge Protection  
**TRABTECH**



Signal Converters, Switching Devices  
and Power Supplies  
**INTERFACE**



Components and Systems  
**AUTOMATION**

PHOENIX CONTACT GmbH & Co. KG  
D-32823 Blomberg, Germany  
Phone: +49/5235/3-00  
Fax +49/5235/3-1 07 099  
[www.phoenixcontact.com](http://www.phoenixcontact.com)